



THE TUKI

EXPLORE OUR MOST POPULAR EASYBACH MODEL

easybach



SEE MORE PHOTOS
AT EASYBACH.CO.NZ



easybach

BUILDS FROM \$199,900*

*16M LONG, 2 BEDROOM, 1 BATHROOM WITH
STANDARD SPECIFICATIONS AND INTERIOR FIT-OUT



ABOUT

THE TUKI



UP TO 108M² TOTAL
LIVING AREA



2 BEDROOMS



1+ BATHROOM



+ 2M WIDE DECK
AND VERANDAH

The Tuki is our most loved model for many reasons. At its heart - a timeless design and spacious open-plan living, boasting up to 108M² of total living space. Almost every inch of our Tuki model is customisable to fit your exact needs.



ABOUT

THE TUKI



UP TO 108M² TOTAL
LIVING AREA



1-3 BEDROOMS



1+ BATHROOMS



+ 2M WIDE DECK
AND VERANDAH

BUILDS FROM \$199,900

FOR 16M, 2 BEDROOM, 1 BATHROOM BUILD WITH STANDARD SPECIFICATIONS AND INTERIOR FIT-OUT

easybach



RELAXED OPEN-PLAN LIVING

The Tuki's open-plan layout gives you room to relax, host, and live all in one bright, modern space. From the inside out, every inch of the Tuki is made to feel open, connected, and full of light. Wide French or sliding doors span the front of your home, opening seamlessly to your deck and the outdoors.

SEAMLESS INDOOR- OUTDOOR FLOW

Enjoy open, connected living spaces through all four seasons. The Tuki's signature full-length deck and verandah brings the outdoors in. Large doors spanning the length of the Tuki open to a covered 2-metre verandah and spacious deck, perfect for relaxing with your morning coffee, summer BBQs, and soaking in the view.





READY FOR YOU TO ENJOY ALL FOUR SEASONS WITH OUR SIGNATURE DECK & VERANDAH

The deck and verandah is the heart of your Easybach lifestyle. Spanning the full length of the home and covered for year-round use, the deck and verandah lifts the Tuki's total living area up to 108m² and comes pre-attached, ready for transport, and ready for use the moment it touches down.



AGED OAK



NATURAL



WALNUT



BLACK

EXTERIOR FINISHING & DETAILING

Whether you prefer the warm, rustic look of aged timber, or the boldness of black-on-black, the Tuki gives you cladding options that suit your land and style.

Choose from a mix of Colorsteel and natural pine or cedar cladding, available in a range of stain finishes.

Every Tuki is built in Hawke's Bay using trusted New Zealand materials, and finished with durability in mind, so it looks great from day one, and even better as it ages.



BATHROOMS BUILT FOR REAL-LIFE

The Tuki gives you the freedom of a large central bathroom, or two private ensuites, complete with a full-sized shower, modern fittings, and layout options that suit your lifestyle. The Tuki's bathroom spaces are designed to feel open, bright, and fully functional meaning you don't have to compromise on comfort.

INCLUDED:

- Vanity & Sink with Mixers
- 900x900 Shower Unit
- S-Trap Toilet Suite
- Lighting
- Extractor Fan
- Mirror
- Heated Towel Rail



COMPROMISE-FREE KITCHENS

From matte-black modern to classic and cosy, your Tuki kitchen is thoughtfully designed to match your personal taste, ready for real living and everyday use. With full-sized appliances and quality details included, there's no need to compromise on style or function.

INCLUDED:

Stainless-Steel Sink
Oven and Range
4-Burner Gas Hob
Cabinetry

Soft-Close Drawers
Counter Top
Extractor Vent
Lighting

CONSTRUCTION SPECIFICATIONS

EXTERNAL:

Sustainable NZ Pine Framing
Timber & Colorsteel Cladding Options
Colorsteel Corrugated Roofing
Colorsteel Guttering & Downpipes
Powdercoated Aluminium Joinery
Double-Glazed Windows & Doors
2M-wide Timber Deck & Verandah

INSULATION:

Ultra Walls R2.8
Classic Ceiling 3.6

INTERNAL:

Interior walls skim-coated - ready for painting
Chipboard Strandfloor
Vinyl and Carpet Flooring Options
Hinged & Cavity Doors
Plug Sockets

OPTIONAL EXTRAS:

Fireplace
Airconditioning
Solar Fit-Out
Wastewater System
Composting Toilet Suite
Hot Water Cylinder
Bathroom Heater

KITCHEN:

Stainless-Steel Sink
Oven and Range
4-Burner Gas Hob
Cabinetry
Soft-Close Drawers
Counter Top
Extractor Vent
Lighting

OTHER INCLUSIONS:

Rinnai Infinity hot water system
Indoor & outdoor lighting
Plumbing & electrical fit-out

BATHROOM:

Vanity & Sink with Mixers
900x900 Shower Unit
S-Trap Toilet Suite
Lighting
Extractor Fan
Mirror
Heated Towel Rail





FLOOR PLAN #1

17M LONG

2 BEDROOMS

68.85M² INSIDE | 108.85M² TOTAL LIVING AREA



2 BATHROOMS



+ 2M WIDE DECK AND VERANDAH

FLOOR PLAN #2

18M LONG

2 BEDROOMS

72.9M² INSIDE | 108.9M² TOTAL LIVING AREA



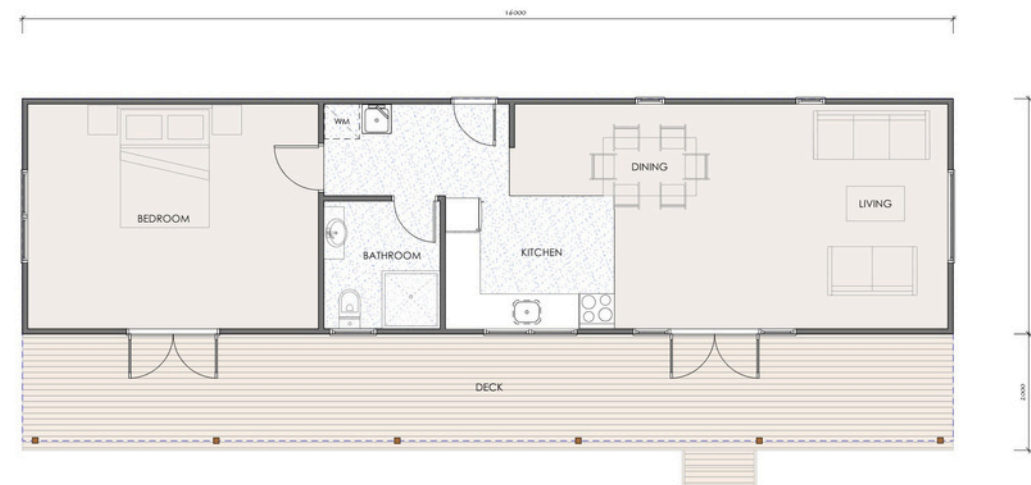
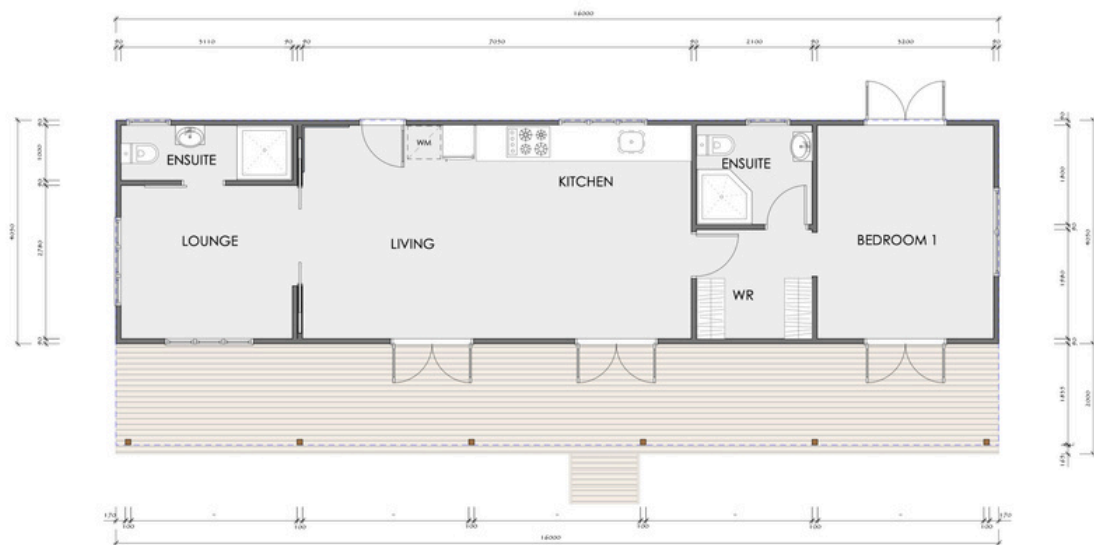
1 BATHROOM



+ 2M WIDE DECK AND VERANDAH

THE TUKI

easybach



FLOOR PLAN #3

16M LONG

1 BEDROOM + LOUNGE

64.8M² INSIDE | 96.85M²
TOTAL LIVING AREA



2 BATHROOMS



+ 2M WIDE DECK
AND VERANDAH

FLOOR PLAN #4

16M LONG

1 BEDROOMS

64.8M² INSIDE | 96.85M²
TOTAL LIVING AREA



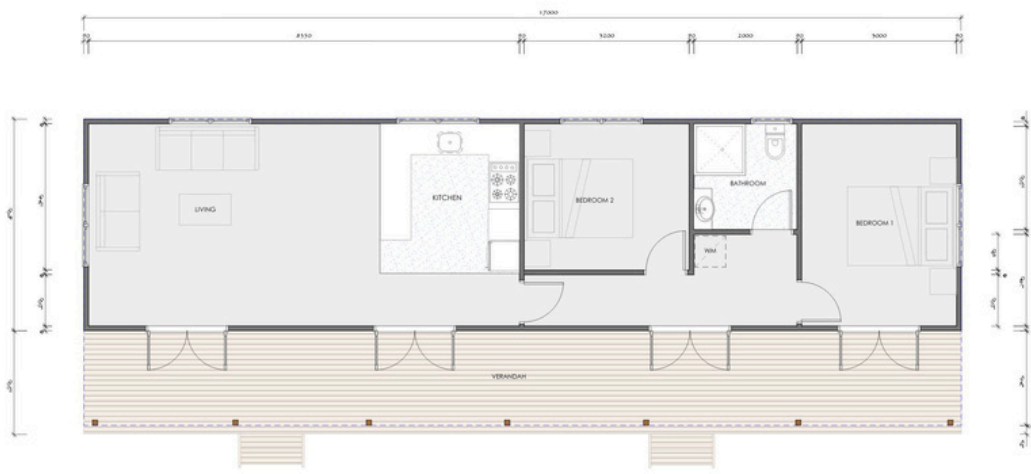
1 BATHROOM



+ 2M WIDE DECK
AND VERANDAH

THE TUKI

easybach



?

FLOOR PLAN #5



17M LONG



2 BEDROOM



68.85M² INSIDE | 96.85M²
TOTAL LIVING AREA



1 BATHROOM



+ 2M WIDE DECK
AND VERANDAH

THE TUKI

FLOOR PLAN #6



18M LONG



3 BEDROOMS



72.9M² INSIDE | 108.9M²
TOTAL LIVING AREA



2 BATHROOM



+ 2M WIDE DECK
AND VERANDAH

easybach



TRANSPORTING YOUR NEW HOME

Brittons have delivered over 100 of our Easybach homes across New Zealand over the past 17 years. As our trusted transport partner, they're the best in the business when it comes to getting your new home safely to site, no matter how tricky the access.

Transport is arranged directly through Brittons and priced separately from your Easybach build, but we'll help coordinate everything to make it easy on your end. Wherever you are in the North Island, we'll work together to get your new Tuki delivered in perfect condition.



SEE MORE ON OUR WEBSITE
EASYBACH.CO.NZ



easybach

FAQS

How Much Does a Tuki Cost?

Tukis start from \$199,000 incl. GST.

Most of our builds land around \$250,000 once customised. Our largest, highest-spec models can reach up to \$300,000. Want an exact number for your build? Let's walk through it together.

How Does Delivery Work?

Your Tuki is built at our Easybach yard in Hastings and then delivered and set up on your land, anywhere in the North Island. We'll handle the logistics - transport, foundations, even site prep - working with trusted partners to make it as easy as possible.

Delivery costs vary depending on your site access and location.

How Long Until I'm In My New Tuki?

From sign-off to delivery, most Tuki builds take between 12-16 weeks depending on your customisation and schedule. We'll give you a clear timeline before we start so there are no surprises.

Is Finance Available?

Yes - Easybach is an accredited partner of Westpac NZ, who offer dedicated financing options for portable homes like the Tuki. See more on the next page.

Do I Need Consent?

This is where we make things EASY.

After 17 years in the business, we're pros at paperwork. We'll take care of as much of the council consent process as we can. Even though your Tuki is a portable home, it's treated like any standard NZ house - built to code by licensed NZ professionals, consented, and fully-covered by a 10-year guarantee. By the time it's delivered, it's council-approved and ready for you to move in, stress-free.

What Can I Customise?

Almost every inch of your Easybach build is customisable. From the layout, to the exterior, and of course everything that goes inside. Once you decide on your model, we'll guide you through the customisation options with our architect so your Tuki is fit for your lifestyle.

When it comes to floor plans, you can either choose from one of our dozens of existing Tuki plans, or work alongside our team on one that is bespoke to you.



Owning An Easybach Made Easier Thanks to Westpac

Easybach is an accredited partner of Westpac.

Westpac now offers dedicated financing for portable homes like the Tuki, making ownership more accessible than ever. That means you could secure your new home with as little as a 10% deposit.

Thinking of financing a Tuki? Scan the QR code below to find out more about how Westpac can help.



Prebuilt home loan.

A home loan option for construction of prefabricated homes. You could have a prefabricated home that's more affordable than traditional options.

 Westpac NZ

After 17 years and over 100 Easybach homes delivered around the country, I'm proud to offer quality, affordable housing for Kiwis. Every home is built right here in Hawke's Bay using trusted New Zealand materials, designed to last, stand up to our conditions, and still look great years down the track.

Whether you're downsizing, going off-grid, or adding a smaller home to your property, I'd love to help you make it happen.

Ready To Chat?

Contact Jamie at Easybach

jamie@easybach.co.nz

027 666 8333

📍 83 Pilcher Road, Hastings

easybach

